



上海期货交易所及上海国际能源中心 市场数据服务简介

The Brief Introduction of Shanghai Futures Exchange (SHFE) and
Shanghai International Energy Exchange(INE)
market data service

信息管理部 2018年4月

Information Management Department April,2018



Part 1

上海期货交易所（SHFE）市场数据发布和授权 SHFE market data distribution and licensed

1

上期所挂牌的交易品种和交易时间
Futures Contracts Listed on SHFE And Trading Hours

2

上期所行情授权的分类和定价
The Classification And Pricing of SHFE Market Data

3

上期所实时行情的接入方式
Access Mode of SHFE Market Data



上海期货交易所
SHANGHAI FUTURES EXCHANGE

上期所目前挂牌交易的品种和交易时间

Listed Contracts and Trading Hours

产品分类	品种名称
有色金属	铜、铝、锌、铅、镍、锡
贵金属	黄金、白银
钢材	螺纹钢、线材、热轧卷板
能源化工	燃料油、天然橡胶、石油沥青

Category	Products
Nonferrous metals	copper, aluminum, zinc, lead, nickel, tin
Precious metals	gold, silver
Steel	steel rebar, steel wire rod, hot rolled coil,
Energy & chemical	fuel oil, bitumen and natural rubber.

8:55 ~ 8 : 59	集合竞价
9:00 ~ 10 : 15	日盘交易
10:30 ~ 11 : 30	日盘交易
13:30 ~ 15 : 00	日盘交易
21:00 ~ 2:30	夜盘交易

8:55 ~ 8: 59	Auctions
9:00 ~ 10: 15	Day Session
10:30 ~ 11: 30	Day Session
13:30 ~ 15: 00	Day Session
21:00 ~ 2:30	Night Session

上期所行情产品的分类和定价

Category & Pricing

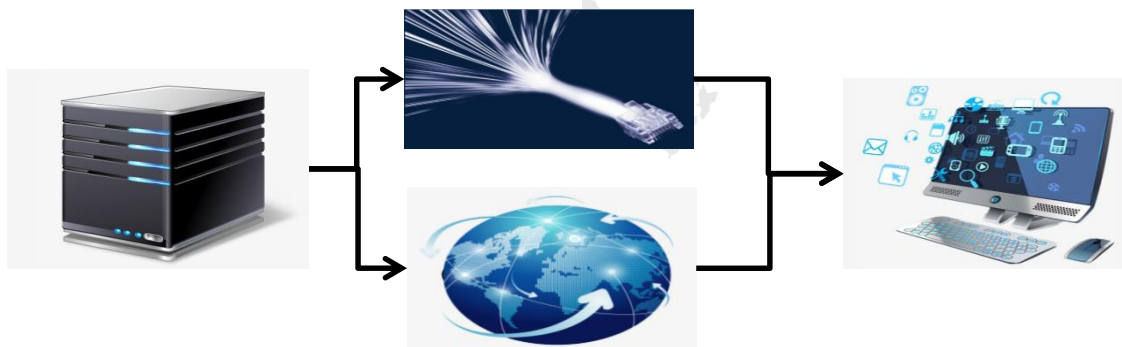
产名分类	授权费/年	终端费/月
延时行情(境外)	1万美元	N/A
基本行情(境外)	3.6万美元	15美元/台/月

Category	License fee/Year	Terminal fee/Mon
Delayed data	10,000 USD	N/A
Real-time data	36,000 USD	15 USD

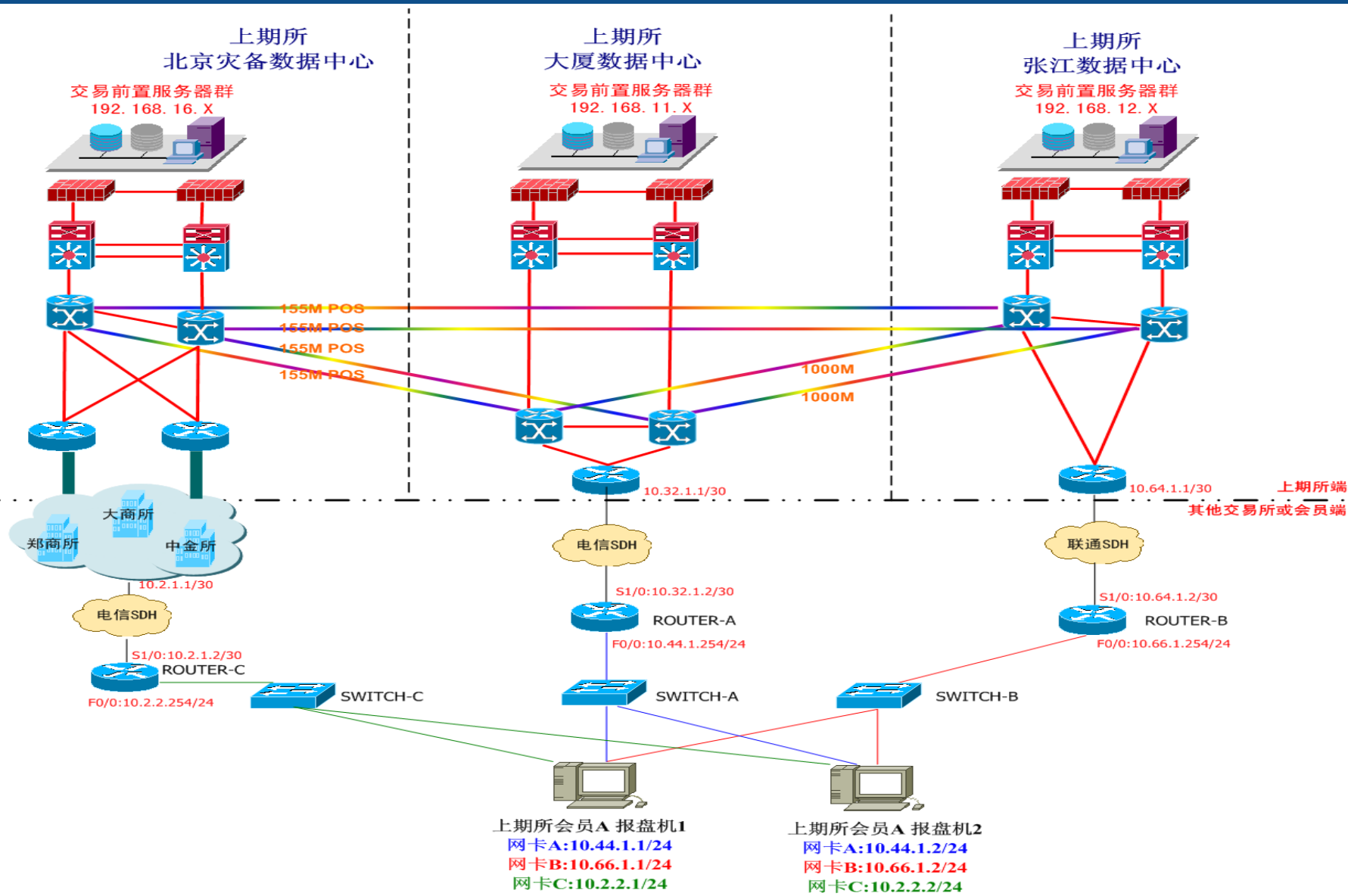
交易所行情的接入模式

Access mode

- 信息转发商可以通过专线（4M MSTP）和互联网两种连接方式来获取SHFE的行情数据；
- 接入交易专网的信息服务商，使用双线方式接入上海期货大厦数据中心、张江数据中心或北京数据中心中的两个数据中心；
- 交易所提供API的接口技术文档；
- 境外信息商也可以选择通过中国投资信息平台CIIP获取上期所和能源中心的行情数据；
- Two feeds in SHFE and INE real time data: one is leased line and the another is via internet；
- There are three data centers in SHFE. Two DCs are in Shanghai (PuDian DC and ZhangJiang DC), One in Beijing. It might need at least connect to two DCs for network redundancy;
- The API Interface Specification is available;
- CIIP is also an choose for overseas vendors to access SHFE and INE data



Network Configuration Diagram





Part 2

上海国际能源中心（INE）市场数据服务
INE Market data Service



上海期货交易所
SHANGHAI FUTURES EXCHANGE

能源中心(INE)简介

INE Introduction

- 上海国际能源交易中心股份有限公司(以下简称上期能源)是经中国证监会批准,由上海期货交易所发起设立的、面向期货市场参与者的国际交易场所,根据《公司法》、《期货交易管理条例》和中国证监会等有关法律法规履行期货市场自律管理职能。
- 2013年11月,上期能源注册于中国(上海)自由贸易试验区,经营范围包括组织安排原油、天然气、石化产品等能源类衍生品上市交易、结算和交割,制定业务管理规则,实施自律管理,发布市场信息,提供技术、场所和设施服务。



- Approved by the China Securities Regulatory Commission (“the CSRC”), the Shanghai International Energy Exchange Co., Ltd., or INE, is an international exchange that is jointly initiated and established by relevant entities including the Shanghai Futures Exchange, and open to global futures participants. As a self-regulated entity, INE discharges its duties pursuant to *the Company Law, the Regulations on the Administration of Futures Trading* and relevant rules and regulations prescribed by the CSRC.
- Registered in the China (Shanghai) Pilot Free Trade Zone on November 6th, 2013, INE operates the listing, clearing and delivery of energy derivatives including crude oil, natural gas, petrochemicals, etc., formulates business rules, implements self-regulation, publishes market information, and provides technology, venue and facility services..



上海国际能源交易中心
SHANGHAI INTERNATIONAL ENERGY EXCHANGE
上海期货交易所成员单位 AN SHFE COMPANY



上海期货交易所
SHANGHAI FUTURES EXCHANGE

我国首个国际化期货品种——原油期货于2018年3月26日 在上海国际能源交易中心挂牌上市

China's First International Futures
Contracts. Crude Oil Futures Was Launched In INE In
March 26, 2018.

原油期货合约行情

代码	最新价	涨跌	买量	买价	卖价	卖量	成交量
sc1809	432.0	+16.0	1	432.0	432.0	2	30742
sc1810	429.0	+13.0	2	425.0	429.0	2	578
sc1811	426.0	+10.0	1	377.0	431.0	1	124
sc1812	423.0	+7.0	1	422.0	423.0	1	210
sc1901	421.0	+5.0	1	401.0	422.0	1	64
sc1902	416.0		3	374.0	456.0	14	
sc1903	415.0	-1.0	1	375.0	457.0	1	6
sc1906	405.0	+17.0	1	378.0	409.0	4	160
sc1909	396.0	+8.0	3	395.0	397.0	1	68
sc1912	388.0		5	385.0			

原油期货上市仪式
13:17:04

原油期货上市仪式
INE CRUDE OIL FUTURES LAUNCHING CEREMONY

中国-上海 SHANGHAI CHINA
2018.03.26

原油期货标准合约

交易品种	中质含硫原油
交易单位	1000桶/手
报价单位	元（人民币）/桶（交易报价为不含税价格）
最小变动价位	0.1元（人民币）/桶
每日价格最大波动限制	不超过上一交易日结算价±4%
合约交割月份	36个月以内，其中最近1-12个月为连续月份合约，12个月以后为季月合约
交易时间	上午9:00 - 11:30，下午1:30 - 3:00和上海国际能源交易中心规定的其他交易时间
最后交易日	交割月份前一月份的最后一个交易日；上海国际能源交易中心有权根据国家法定节假日调整最后交易日
交割日期	最后交易日后连续五个工作日
交割品级	中质含硫原油，基准品质为API度32，含硫量1.5%，具体可交割油种及升贴水由上海国际能源中心另行规定
交割地点	上海国际能源交易中心指定交割仓库
最低交易保证金	合约价值的5%
交割方式	实物交割
交易代码	SC
上市交易所	上海国际能源交易中心



Contract text

Product	Medium Sour Crude Oil
Contract Size	1000 barrels per lot
Price Quotation	(RMB) Yuan per barrel (no tax or duty included in the quotation)
Minimum Price Fluctuation	0.1 Yuan / barrel
Daily Price Limits	±4% from the settlement price of the previous trading day
Listed Contracts	Monthly contracts of recent twelve (12) consecutive months followed by eight (8) quarterly contracts.
Trading Hours	9:00-11:30 a.m., 1:30-3:00 p.m. (the Beijing Time), and other trading hours as prescribed by the Exchange
Last Trading Day	The last trading day of the month prior to the delivery month; The Shanghai International Energy Exchange is entitled to adjust the last trading day in accordance with the national holidays.
Delivery Period	Five (5) consecutive trading days after the last trading day.
Grades and Quality Specifications	Medium sour crude oil with the quality specifications of API 32.0 degrees and sulfur content 1.5% by weight The deliverable grades and the price differentials will be stipulated separately by the Shanghai International Energy Exchange.
Delivery Venues	Delivery Storage Facilities designated by the Shanghai International Energy Exchange
Minimum Trading Margin	5% of contract value
Settlement Type	Physical delivery
Product Symbol	SC
Listing Exchange	Shanghai International Energy Exchange

原油期货合约设计总体方案

Basic Framework

- 国际平台、净价交易、保税交割、人民币计价
- INE is under a basic framework of "International Platform, Net Price Trading, Bonded Delivery and RMB Denomination" ,

交易品台
International
Platform

国际化平台——交易、结算、交割国际化
Trading, delivering and clearing internationally

价格含义
Net Price Trading

净价交易——报价不含关税、增值税等
Pricing based on net value exclusive of customs duty and VAT,

交割方式
Bonded Delivery

保税交割——保税油库，仓单交割
Physical delivery based on bonded oil depots.

计价货币
RMB
Denomination

人民币计价和结算，外币可作为保证金
Using RMB in trading and delivery, and foreign exchanges such as USD are accepted as margin collaterals.



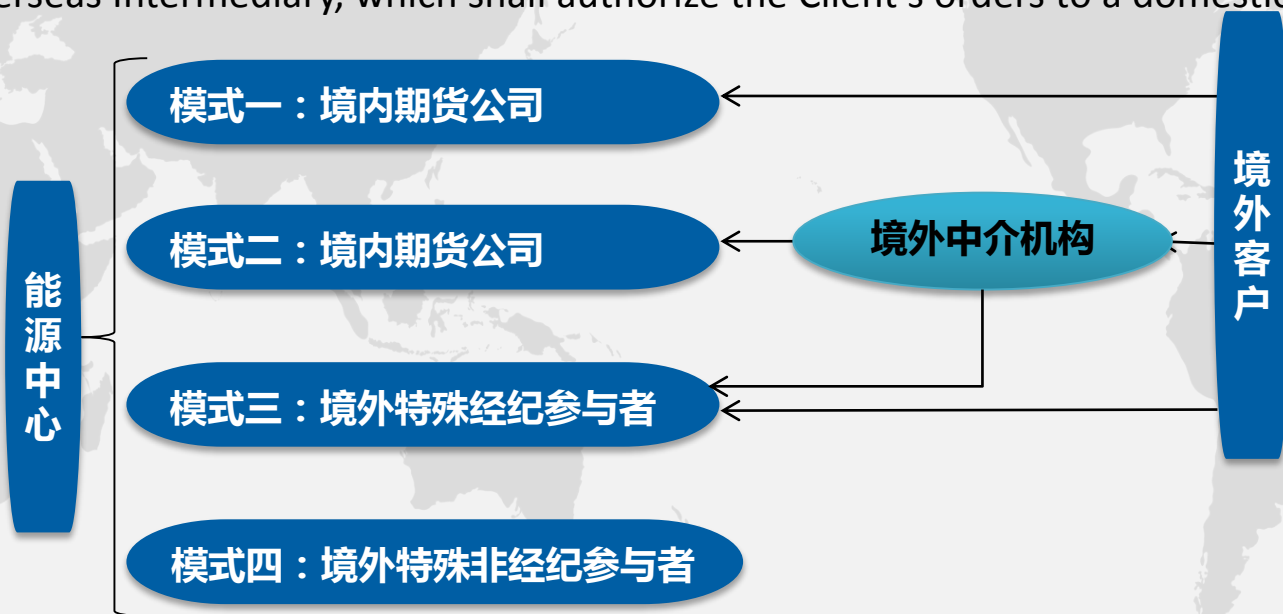
原油期货合约特点：境外交易者可以直接参与

The trading mode of crude oil futures for overseas

境外投资者参与境内期货交易路径图

four methods for overseas traders to participate in the trading of crude oil futures:

- Directly participate in trading at the Exchange as an Overseas Special Non-Brokerage Participant (“OSNBP”);
- As a Client of an Overseas Special Brokerage Participant (“OSBP”);
- As a Client of a domestic Futures Firm Member (“FF Member”);
- Through an Overseas Intermediary, which shall authorize the Client’s orders to a domestic FF Member or an OSBP.



注：模式三和四：境外特殊参与者必须通过境内期货公司与能源中心进行结算

Notes: The clearing and settlement of the above OSNBPs and OSBPs with the Exchange shall be through domestic FF Members.

能源中心信息授权模式概述

The outline of INE market data vendor license

发布方式
Data type

与上期所行情发布的模式相同：分为实时行情和延时行情
Same as SHFE :Real-time and Delayed Data

行情接入
Access

复用上期所现有行情商接入的专线连接
Share Existing Leased Line Link With SHFE.

行情商授权
Vendors
licensed

以能源中心为单独主体对外受理和签约
Agreement Signed Under The Name of INE

产品分类与
定价
Pricing

与上期所现有的定价标准保持一致
Same as SHFE Fee Schedule

优惠措施
Preferential
measure

INE的年度授权费和终端费用至2018年12月31日暂不收取，2019年恢复收费
The license and terminal fee will be exempted by the end of this year
若已经是上海期货交易所授权信息商，INE能源中心的授权费优惠50%
The Annual License Fee Will be 50% off If You Are a Vendor of SHFE



INE行情产品的分类和定价

INE market data category and pricing

行情分类	授权费/年	终端费/月
延时行情	1万美元	N/A
实时行情	3.6万美元	15美元/台/月

Category	License fee/Year	Terminal fee/Mon
Delayed data	10,000 USD	N/A
Real-time data	36,000 USD	15 USD





Thank you!



上海期货交易所
SHANGHAI FUTURES EXCHANGE